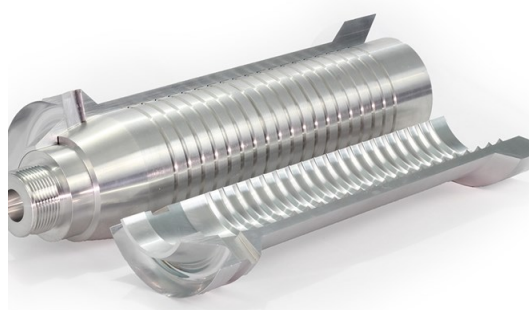


GPSA is an SBA approved, 8(a) & Women Owned Joint Venture between **D Gillette Industrial Services** and **Production Systems Automation**. With over 30 years of experience, we provide a wide range of capabilities, backed by excellent past performance, for the DoD and other government agencies. GPSA is honored to assist the needs of the Warfighter while creating value for the Taxpayer.

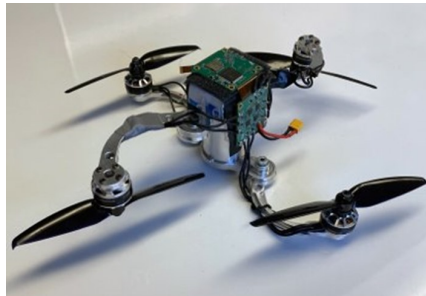
**Engineering Services**

- Design
- Technical support services
- SOP development
- Maintenance enforcement
- Prevention measures
- Reverse engineering
- Testing plans & procedures



**Manufacturing Solutions**

- Robotic automation services
- CNC precision machining solutions
- Fabrication services
- Turning, milling
- Mig, Tig, Stick welding
- Sheet metal cutting and bending
- Additive manufacturing
- Prototype development
- Tooling design
- Electrical panels and harnesses
- Drone design, engineering and manufacturing
- Safety and guarding solutions
- Machinery rebuilds



**Existing Equipment Life Management (EELM)**

- Parts usage & extended life traceability
- Parts room database development planning

**Program Management**

- Risk management
- Quality assurance
- Configuration management

**Lifecycle Sustainment**

- Data & technical packages
- Manufacturing level drawings
- New material development
- Analysis & testing plans

**Reverse Engineering & Prototype Development**

- Advanced measurement
- 3D surface modeling
- Materials testing
- Mechanical, physical and electronic testing
- Production process documentation

**Additional Capabilities**

- Remediation services
- Clean room fabrication
- Electromagnetic cleaning process
- O&M manuals
- ILS technical manuals

**CUSTOMERS:**

US Army    US Navy    US Marine Corps    US Air Force    US Coast Guard    Defense Logistics Agency

**RECENT PAST PERFORMANCE:**

NAVAIR - Cable Assemblies, ALRE Visual Landing Aides, Bomb Carts,  
Picatinny Arsenal - Launchable Drone, Howitzer Recoil Exercisor, Robot Integration, Tungsten Penetrator, Sabot Petals  
US Coast Guard - Retaining Rod Clips



**D Gillette Industrial Services, Inc.**  
46 North Main Street  
Bangor, PA 18013  
610.588.4939  
Dee.gillette@deegindustries.com



**Production Systems Automation, Inc.**  
1 Crozerville Road    201 Clark Road  
Aston, PA 19014    Duryea, PA 18642  
610.358.0500    570.602.4200  
dwaldmann@psasystems.com



**CAGE Code: 8S0Z0**

**DUNS: 117713765**

## NAICS LIST

NAICS	Description
326121	UNLAMINATED PLASTICS PROFILE SHAPE MANUFACTURING
326199	ALL OTHER PLASTICS PRODUCT MANUFACTURING
326220	RUBBER AND PLASTICS HOSES AND BELTING MANUFACTURING
326291	RUBBER PRODUCT MANUFACTURING FOR MECHANICAL USE
327999	ALL OTHER MISCELLANEOUS NONMETALLIC MINERAL PRODUCT MANUFACTURING
331210	IRON AND STEEL PIPE AND TUBE MANUFACTURING FROM PURCHASED STEEL
332312	FABRICATED STRUCTURAL METAL MANUFACTURING
332313	PLATE WORK MANUFACTURING
332322	SHEET METAL WORK MANUFACTURING
332510	HARDWARE MANUFACTURING
332710	MACHINE SHOPS
332721	PRECISION TURNED PRODUCT MANUFACTURING
332722	BOLT, NUT, SCREW, RIVET, AND WASHER MANUFACTURING
332911	INDUSTRIAL VALVE MANUFACTURING
332912	FLUID POWER VALVE AND HOSE FITTING MANUFACTURING
332919	OTHER METAL VALVE AND PIPE FITTING MANUFACTURING
332996	FABRICATED PIPE AND PIPE FITTING MANUFACTURING
332999	ALL OTHER MISCELLANEOUS FABRICATED METAL PRODUCT MANUFACTURING
333249	OTHER INDUSTRIAL MACHINERY MANUFACTURING
333514	SPECIAL DIE AND TOOL, DIE SET, JIG, AND FIXTURE MANUFACTURING
333515	CUTTING TOOL AND MACHINE TOOL ACCESSORY MANUFACTURING
333922	CONVEYOR AND CONVEYING EQUIPMENT MANUFACTURING
333924	INDUSTRIAL TRUCK, TRACTOR, TRAILER, AND STACKER MACHINERY MANUFACTURING
333993	PACKAGING MACHINERY MANUFACTURING
333999	ALL OTHER MISCELLANEOUS GENERAL-PURPOSE MACHINERY MANUFACTURING
334290	OTHER COMMUNICATIONS EQUIPMENT MANUFACTURING
334418	PRINTED CIRCUIT ASSEMBLY (ELECTRONIC ASSEMBLY) MANUFACTURING
334419	OTHER ELECTRONIC COMPONENT MANUFACTURING
334510	ELECTROMEDICAL AND ELECTROTHERAPEUTIC APPARATUS MANUFACTURING
334513	INSTRUMENTS AND RELATED PRODUCTS MANUFACTURING FOR MEASURING, DISPLAYING, AND CONTROLLING INDUSTRIAL PROCESS VARIABLES
334516	ANALYTICAL LABORATORY INSTRUMENT MANUFACTURING
335312	MOTOR AND GENERATOR MANUFACTURING

NAICS	Description
335931	CURRENT-CARRYING WIRING DEVICE MANUFACTURING
335999	ALL OTHER MISCELLANEOUS ELECTRICAL EQUIPMENT AND COMPONENT MANUFACTURING
336330	MOTOR VEHICLE STEERING AND SUSPENSION COMPONENTS (EXCEPT SPRING) MANUFACTURING
488510	FREIGHT TRANSPORTATION ARRANGEMENT
488999	ALL OTHER SUPPORT ACTIVITIES FOR TRANSPORTATION
493110	GENERAL WAREHOUSING AND STORAGE
541330	ENGINEERING SERVICES
541420	INDUSTRIAL DESIGN SERVICES
541512	COMPUTER SYSTEMS DESIGN SERVICES
541614	PROCESS, PHYSICAL DISTRIBUTION, AND LOGISTICS CONSULTING SERVICES
561910	PACKAGING AND LABELING SERVICES
611430	PROFESSIONAL AND MANAGEMENT DEVELOPMENT TRAINING
811118	OTHER AUTOMOTIVE MECHANICAL AND ELECTRICAL REPAIR AND MAINTENANCE
811213	COMMUNICATION EQUIPMENT REPAIR AND MAINTENANCE
811310	COMMERCIAL AND INDUSTRIAL MACHINERY AND EQUIPMENT (EXCEPT AUTOMOTIVE AND ELECTRONIC) REPAIR AND MAINTENANCE

### **D Gillette Industrial Services, Inc.**

46 North Main Street

Bangor, PA 18013

610.588.4939

Dee.gillette@deegindustries.com

### **Production Systems Automation, Inc.**

1 Crozerville Road

Aston, PA 19014

610.358.0500

dwaldmann@psasystems.com

201 Clark Road

Duryea, PA 18642

570.602.4200



CAGE Code: 8S0Z0

DUNS: 117713765

## EQUIPMENT LIST

Laser Engraver	Triumph Laser, Fiber. 1.064 Wavelength	Bangor
Conventional Table Saw	Grizzly Industrial, 2 HP 1700-3500 RPM Speed	Bangor
Milling Machine	Cincinnati 240V, Ctr 110, 60 cycle, 4' bed	Bangor
Lathe	La Blonde Engine Lathe, NB 1234, 14"	Bangor
Conventional Band Saw	Wells Model 8 Horizontal Bandsaw	Bangor
Conventional Cold Saw	Baleigh CS-350EU, 3 HP, 24-120 RPM	Bangor
Drill Press	Greenerd Arbor Press, 1/2 HP	Bangor
CNC 3 Axis Turning	Takumi 2000, 3 Axis, 12,000 RPM	Bangor
CNC 3 Axis Turning	Takumi VC1052, 3 Axis, CAT 40, 12,000 RPM	Bangor
CNC Lathe	Daiwoo Puma 200, 4500 max RPM	Bangor
Conventional Marvel Large Saw	Marvel Vertical Bandsaw	Duryea
Conventional Nosen Small Saw	Nosen Horizontal Bandsaw	Duryea
Conventional Cold Saw	Coldsaw	Duryea
Conventional Table Saw	TableSaw	Duryea
Conventional Miter/Chop Saw	MiterSaw	Duryea
Saw Finishing	Saw Finishing	Duryea
Sawcut Inspection	Saw Inspection	Duryea
CNC Turning Haas TL-1	Haas TL-1	Duryea
CNC Turning Haas SL-20	Haas SL-20	Duryea
CNC Turning Haas ST-40	Haas ST-40	Duryea
CNC Turning Hass ST-25Y	Hass ST25Y	Duryea
CNC Machine Taper Mill	Haas VF6 w/ Gantry Crane	Duryea
CNC Machine 3 Axis Glass Scale Accuracy	Haas VF4 (#1)	Duryea
CNC Machine 4 Axis 3 Jaw Indexer	Haas VF4 (#2)	Duryea
CNC Machine 4 Axis 3 Jaw Indexer	Hass VF4 SS (#3)	Duryea
CNC Machine Extended Y Travel	Haas VF2	Duryea
CNC Machine 5 Axis	Haas UMC 750 SS	Duryea
CNC Machine 5 Axis	Hass UMC 750 SS	Duryea
Conv Turning Large Dia Capacity	Mazak Turning	Duryea
Conv Turning Long Length Capacity	Acme Pacemaker Turning	Duryea
Conv Turning Toolroom Med Capacity	Enco Turning	Duryea
Conv Turning Toolroom Small Capacity	Hardinge Turning	Duryea
Conv Mill Machine Shop Area #1	Bridgeport (#1)	Duryea
Conv Mill Machine Shop Area #2	Bridgeport (#2)	Duryea
Conv Mill Machine Shop Area #3	Bridgeport (#3)	Duryea
Conv Mill Machine Shop Area #4	Bridgeport (#4)	Duryea
Surface Grinder, Long Capacity		Duryea
Surface Grinder, Small Capacity		Duryea
MIG Welding	MIG Welder	Duryea
TIG Welding	TIG Welder	Duryea
Stick Welding	Stick Welder	Duryea
Conventional Plasma Cut	Plasma Cut	Duryea
Conventional Flame Cut	Flame Cut	Duryea
Conventional Brazing	Brazing	Duryea
CNC Amada Brake	CNC Amada Brake	Duryea
Conventional Shear	Conv Shear	Duryea
Do-All Vertical Bandsaw	Do-All Vertical Bandsaw	Duryea
Conventional Brake	Conv Brake	Duryea
Punch Press	Punch Press	Duryea
Inspect CMM Brown & Shape Granite	CMM Brown & Shape Granite	Duryea
Inspect Romar Portable	CMM Romar Portable	Duryea
Inspect Optical Comparator	Optical Comparator	Duryea
Waterjet	Flow 4020 B	Duryea
Press Brake Accupress	AccuPro 100 Ton Press Brake 8 Foot Capacity	Aston
Milling Machine	VMC Tree	Aston
Band Saw	Do-All C916S Horizontal Bandsaw	Aston
Shear	Niagara Bliss 8 Foot up to 10GA Steel, SS, 1/4" Alum	Aston
Welding	Millermatic 250 Mig, (2) Lincoln Tig Welders, Water and Air Cooled	Aston
Forktruck	6500 LB Capacity Forktruck	Aston

### D Gillette Industrial Services, Inc.

46 North Main Street

Bangor, PA 18013

610.588.4939

Dee.gillette@deegindustries.com

### Production Systems Automation, Inc.

1 Crozerville Road

Aston, PA 19014

610.358.0500

dwaldmann@psasystems.com

201 Clark Road

Duryea, PA 18642

610.602.4200